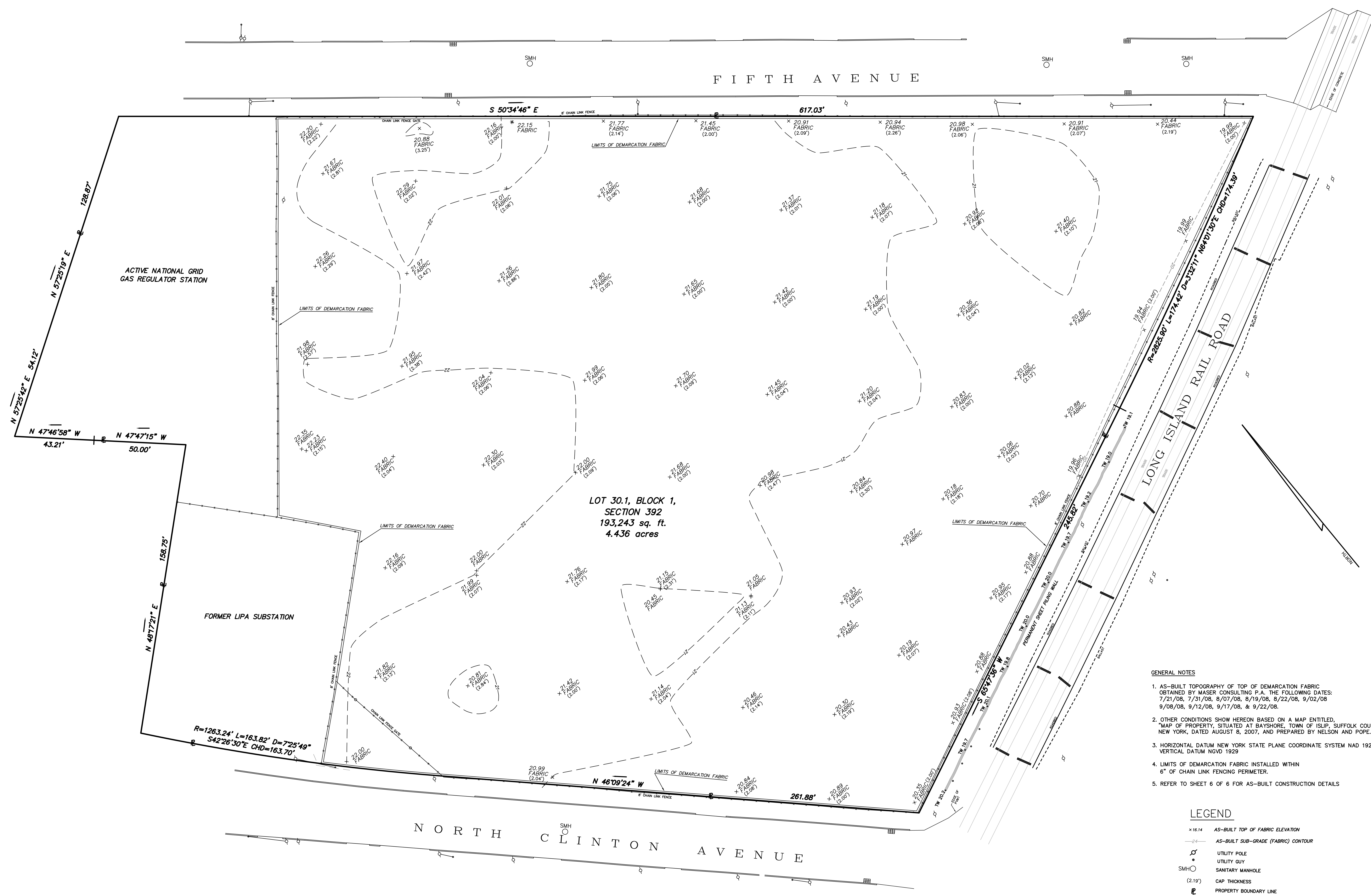


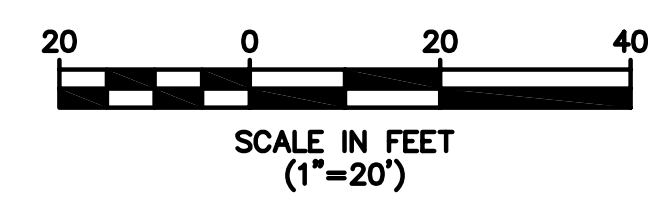
COPYRIGHT © 2008, MASER CONSULTING P.A. - ALL RIGHTS RESERVED.
 THIS DOCUMENT IS THE PROPERTY OF MASER CONSULTING P.A. AND IS NOT TO BE REPRODUCED OR TRANSMITTED IN ANY FORM OR BY ANY MEANS, ELECTRONIC OR MECHANICAL, INCLUDING PHOTOCOPYING, RECORDING, OR BY ANY INFORMATION STORAGE AND RETRIEVAL SYSTEM, WITHOUT THE WRITTEN PERMISSION OF MASER CONSULTING P.A.



**LOT 30.1, BLOCK 1,
 SECTION 392
 193,243 sq. ft.
 4.436 acres**

- GENERAL NOTES**
- AS-BUILT TOPOGRAPHY OF TOP OF DEMARCATION FABRIC OBTAINED BY MASER CONSULTING P.A. THE FOLLOWING DATES: 7/21/08, 7/31/08, 8/07/08, 8/19/08, 8/22/08, 9/02/08, 9/08/08, 9/12/08, 9/17/08, & 9/22/08.
 - OTHER CONDITIONS SHOW HEREON BASED ON A MAP ENTITLED, "MAP OF PROPERTY, SITUATED AT BAYSHORE, TOWN OF ISLIP, SUFFOLK COUNTY, NEW YORK, DATED AUGUST 8, 2007, AND PREPARED BY NELSON AND POPE.
 - HORIZONTAL DATUM NEW YORK STATE PLANE COORDINATE SYSTEM NAD 1927, VERTICAL DATUM NGVD 1929
 - LIMITS OF DEMARCATION FABRIC INSTALLED WITHIN 6" OF CHAIN LINK FENCING PERIMETER.
 - REFER TO SHEET 6 OF 6 FOR AS-BUILT CONSTRUCTION DETAILS

- LEGEND**
- × 16.14 AS-BUILT TOP OF FABRIC ELEVATION
 - - - AS-BUILT SUB-GRADE (FABRIC) CONTOUR
 - UTILITY POLE
 - UTILITY GUY
 - SMH ○ SANITARY MANHOLE
 - (2.19") CAP THICKNESS
 - ▬ PROPERTY BOUNDARY LINE
 - TW 20.2 + TOP OF WALL ELEVATION



REV.	DATE	DRAWN BY	DESCRIPTION
3.	4/16/09	RTH	GENERAL REVISIONS
2.	11/20/08	DJM	GENERAL REVISIONS
1.	10/28/08	RTH	GENERAL REVISIONS

LEONARDO E. PONZIO
 NEW YORK PROFESSIONAL
 LAND SURVEYOR LIC. NO. 056292-1

MASER
 Consulting, Municipal & Environmental Engineers
 Planners • Surveyors • Landscape Architects
 State of N.J. Certificate of Authorization: 24GA27886500

RED BANK OFFICE
 331 Newman Springs Road
 Suite 203
 Red Bank, N.J. 07701
 Phone (732) 383-1950
 Fax (732) 383-1984
 E-mail - solutions@maserconsulting.com

Regional Office
 Clinton, N.J.
 Hamilton, N.J.
 Logan, N.J.
 Mt. Arlington, N.J.
 West Nyack, N.Y.
 Newburgh, N.Y.
 Belthelam, PA.

AS-BUILT SUB-GRADE SURVEY
 (TOPOGRAPHY OF DEMARCATION FABRIC)
 FOR
ENTACT
 NATIONAL GRID US
 BAY SHORE FORMER MANUFACTURED GAS PLANT SITE
 PHASE II, OU-1 REMEDIAL ACTIONS
 SITUATE IN:
 TOWN OF ISLIP SUFFOLK COUNTY NEW YORK

JOB NUMBER: 08000278A
 SCALE: 1"=20'
 SHEET NUMBER: 4 of 6

DATE: OCT 7, 2008
 LATEST REVISION: APRIL 16, 2009
 DESIGN BY: D.J.M.